

Country Profiles Based on PIRLS 2011

gerry.shiel@erc.ie

ELINET Tasks (Partner 9)

- Country reports on PIRLS, following agreed template that covers international studies at post-primary (PISA) and adult (PIAAC) levels as well.
- Initial reports on four countries – England, Germany, Norway, Romania - then extend to all ELINET countries for which PIRLS data are available.
- Supplement with additional national data.
- Report on addressing reading difficulties (at primary level) drawing on range of sources.

Initial Reports on Four Countries

- Germany
- England
- Norway
- Romania

Format of country reports is evolving . . .

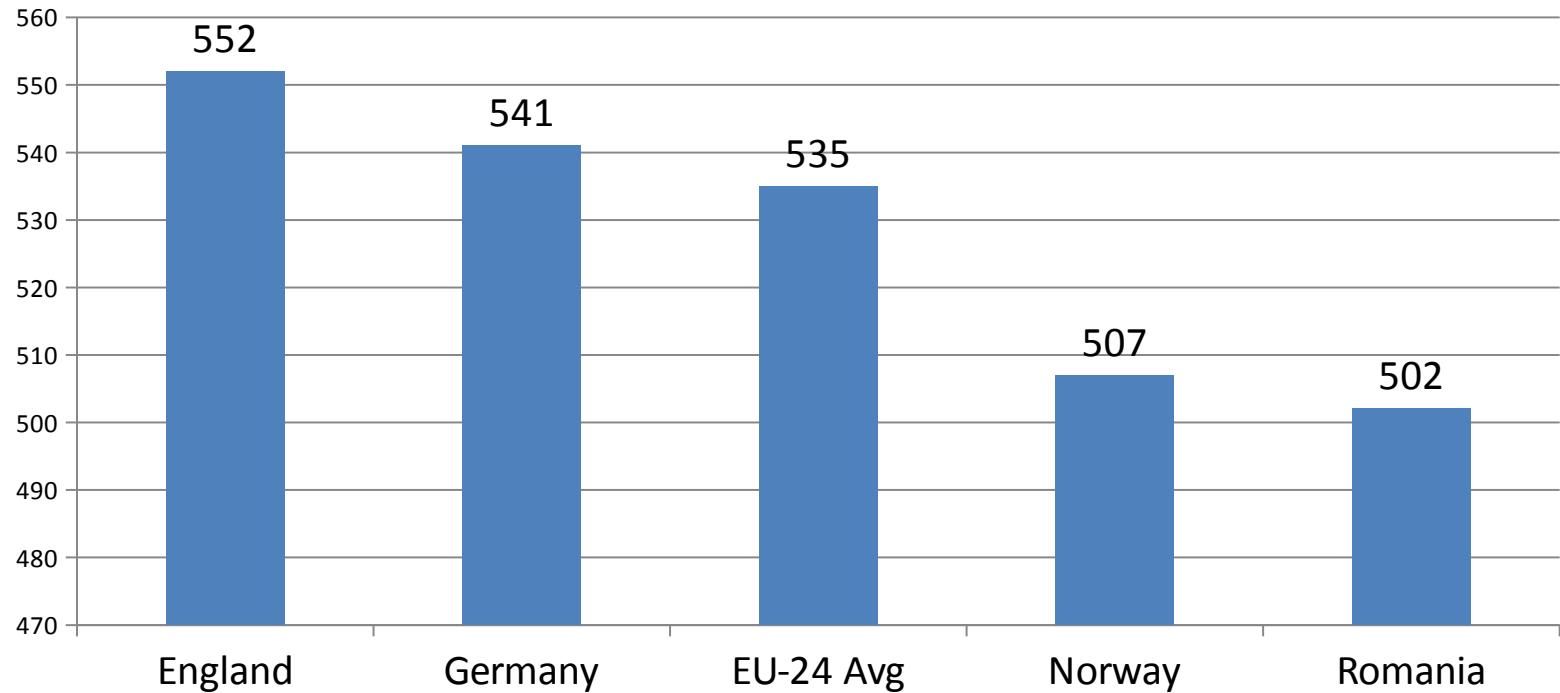
Areas Examined and Value Added

- Overall Reading Performance in 2011 – computation of EU-24 average
- Trends in Performance – Overall, and by Gender
- Identify significant differences in performance on purpose and process subscales (otherwise don't report)
 - Literary, Informational
 - Retrieve & Infer; Interpret, Interpret, Integrate & Evaluate

Areas Examined and Value Added

- **Equity – difference between 10th and 90th percentiles on overall achievement scale**
- Equity – Socioeconomic Status (Parent Education)
- Engagement in Reading (Identifying Gaps, Relative Risk)
 - Like Books,
 - Confidence in Reading,
 - [Motivation to Read]
 - Difficulty comparing engagement measures across countries
 - Report engagement variables as quartiles (new)

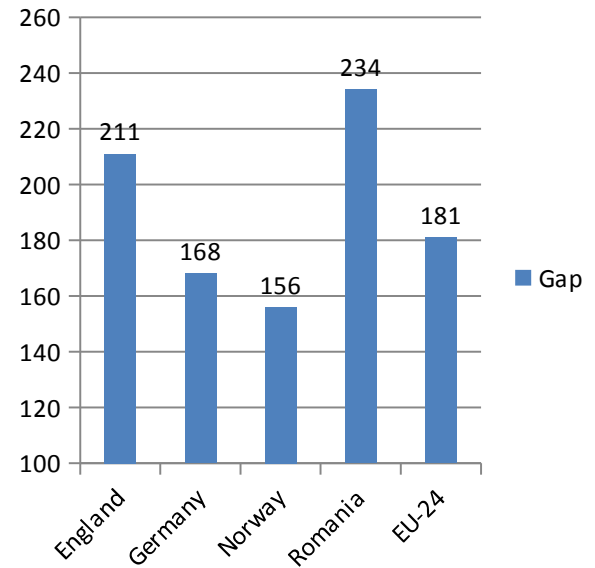
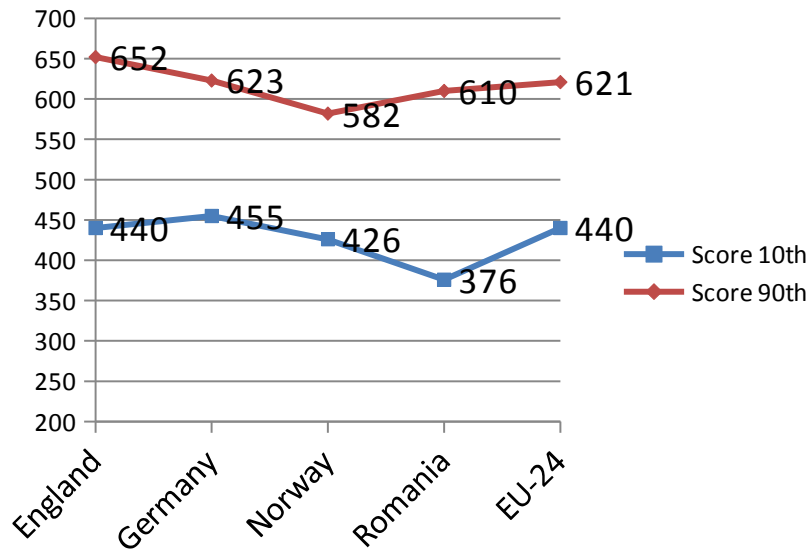
Overall Achievement on PIRLS 2011



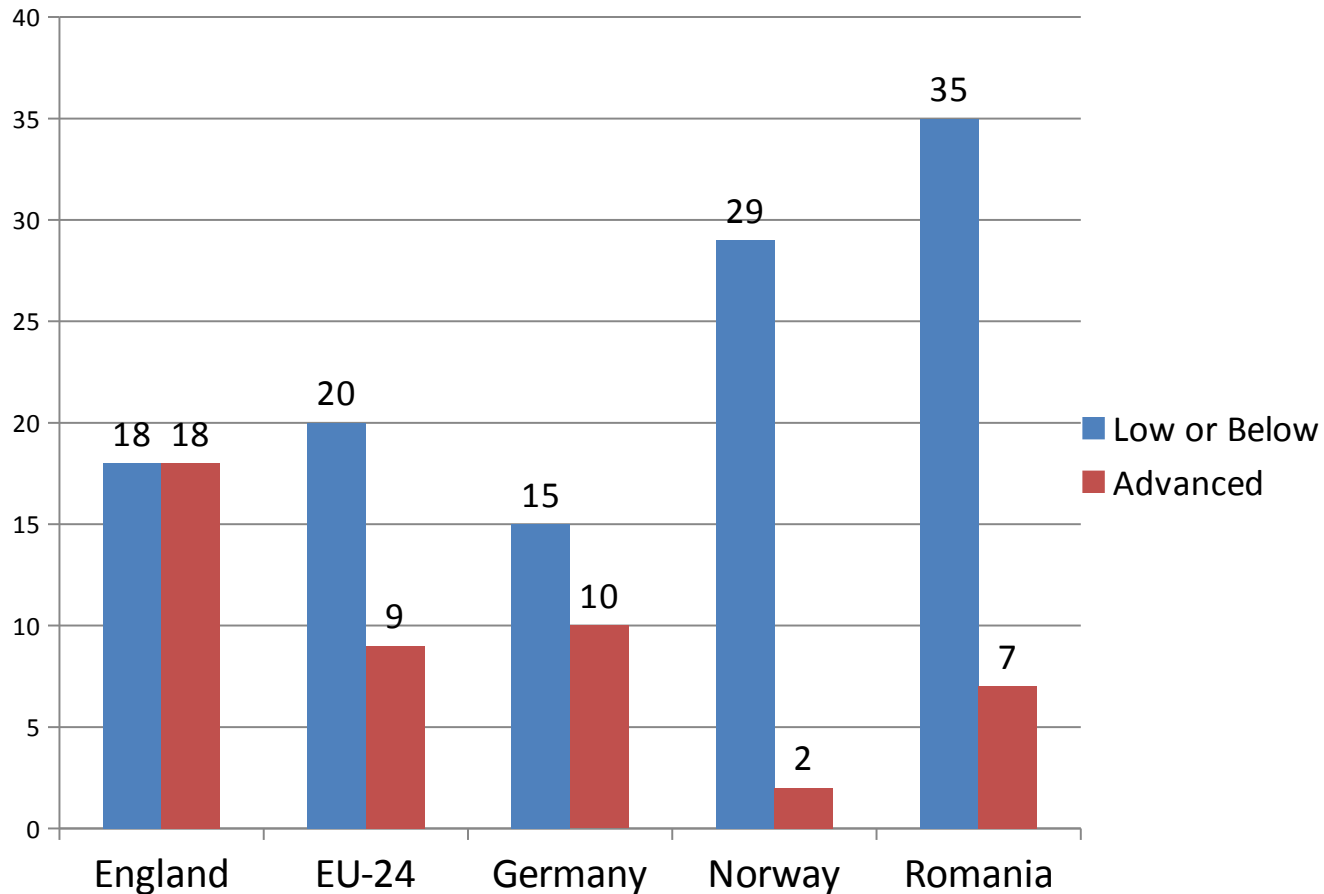
Trends in Overall Achievement - PIRLS

Country	2001-2006	2011-2006	2011-2001
England	-13	12	1
Germany	9	-7	2
Romania	-22	12	-10
Norway	-1	9	8
EU-24	0	1	1

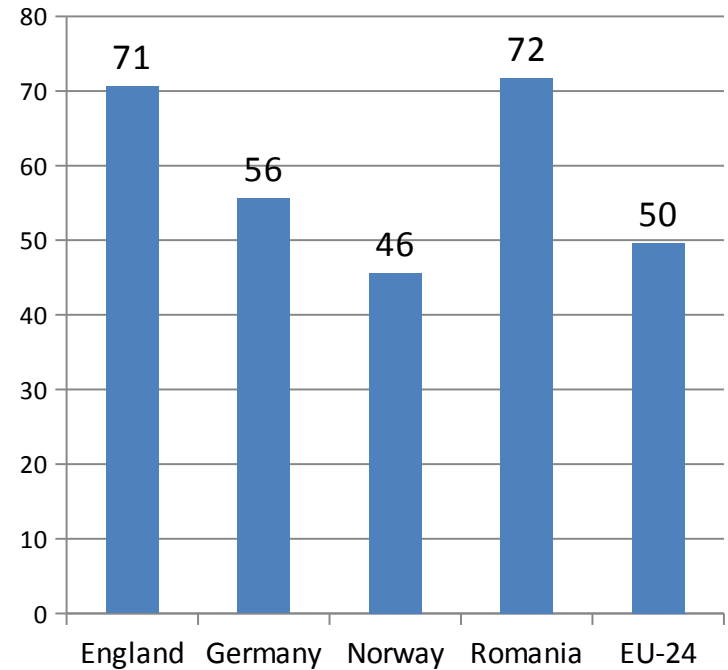
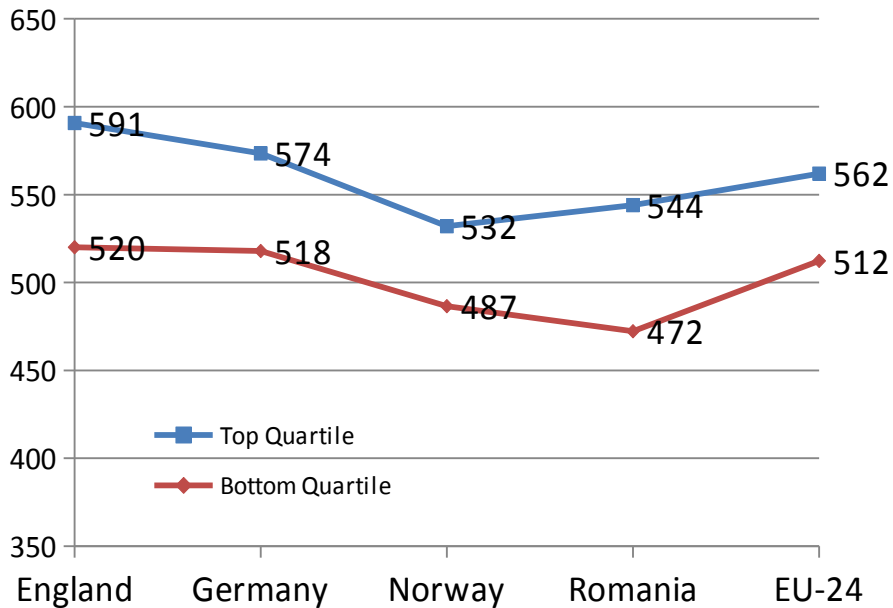
Gaps on Overall PIRLS Reading Between 10th and 90th Percentiles (2011)



Percents of Pupils at Low Benchmark or Below and at Advanced Benchmark

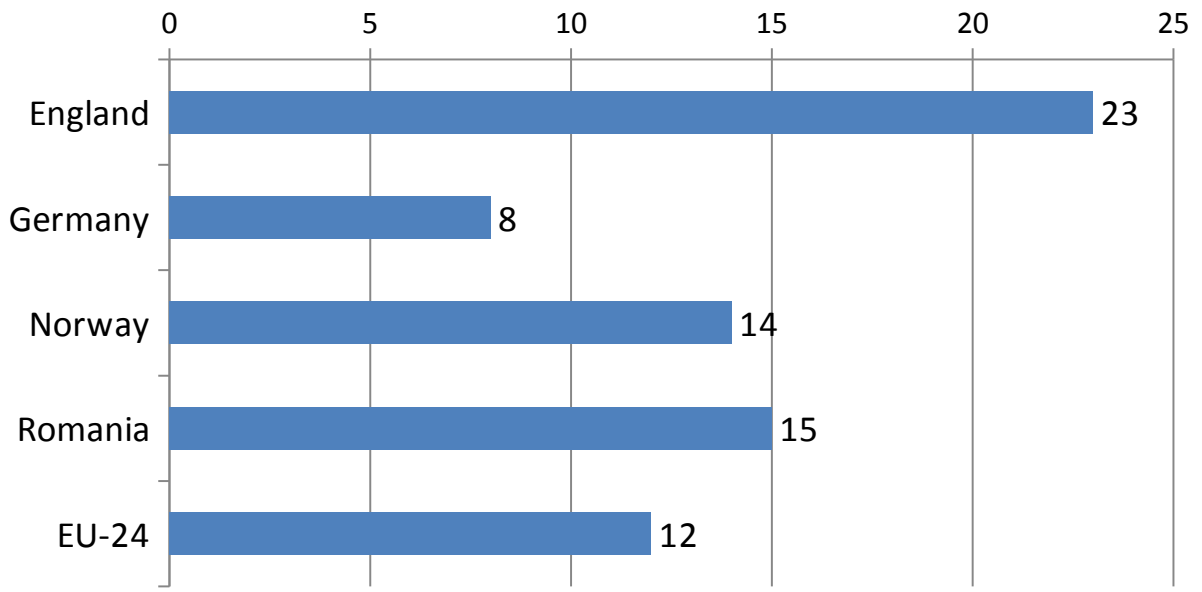


PIRLS Like Books Scale – Reading Scores at Quartiles & Gaps (Q4-Q1)



To be added: Relative Risk (controlling for Gender, SES)

Gender Differences on Overall Reading Literacy in IRLS 2011



Language of Test Spoken at Home?

Country	Always		Sometimes		Never		Difference
	%	Mean	%	Mean	%	Mean	Always - Never Mean
England	79.2 (1.69)	555.7 (2.83)	19.6 (1.62)	540.0 (4.41)	1.3 (0.21)	503.1 (16.13)	52.6 (16.4)
Germany	80.4 (1.13)	550.2 (2.05)	18.9 (1.09)	518.4 (3.62)	0.8 (0.15)	510.6 (15.83)	39.6 (16.0)
Romania	89.4 (1.50)	508.0 (4.23)	9.5 (1.32)	475.1 (9.25)	1.1 (0.35)	406.1 (15.39)	101.9 (16.0)
Norway	81.5 (1.09)	510.9 (2.06)	17.2 (1.05)	493.6 (3.85)	1.3 (0.24)	474.9 (9.79)	36.0 (10.0)
EU-24 Avg	79.65 (0.23)	540.89 (0.52)	17.31 (0.21)	519.47 (1.01)	3.04 (0.09)	482.02 (3.18)	58.9 (3.2)